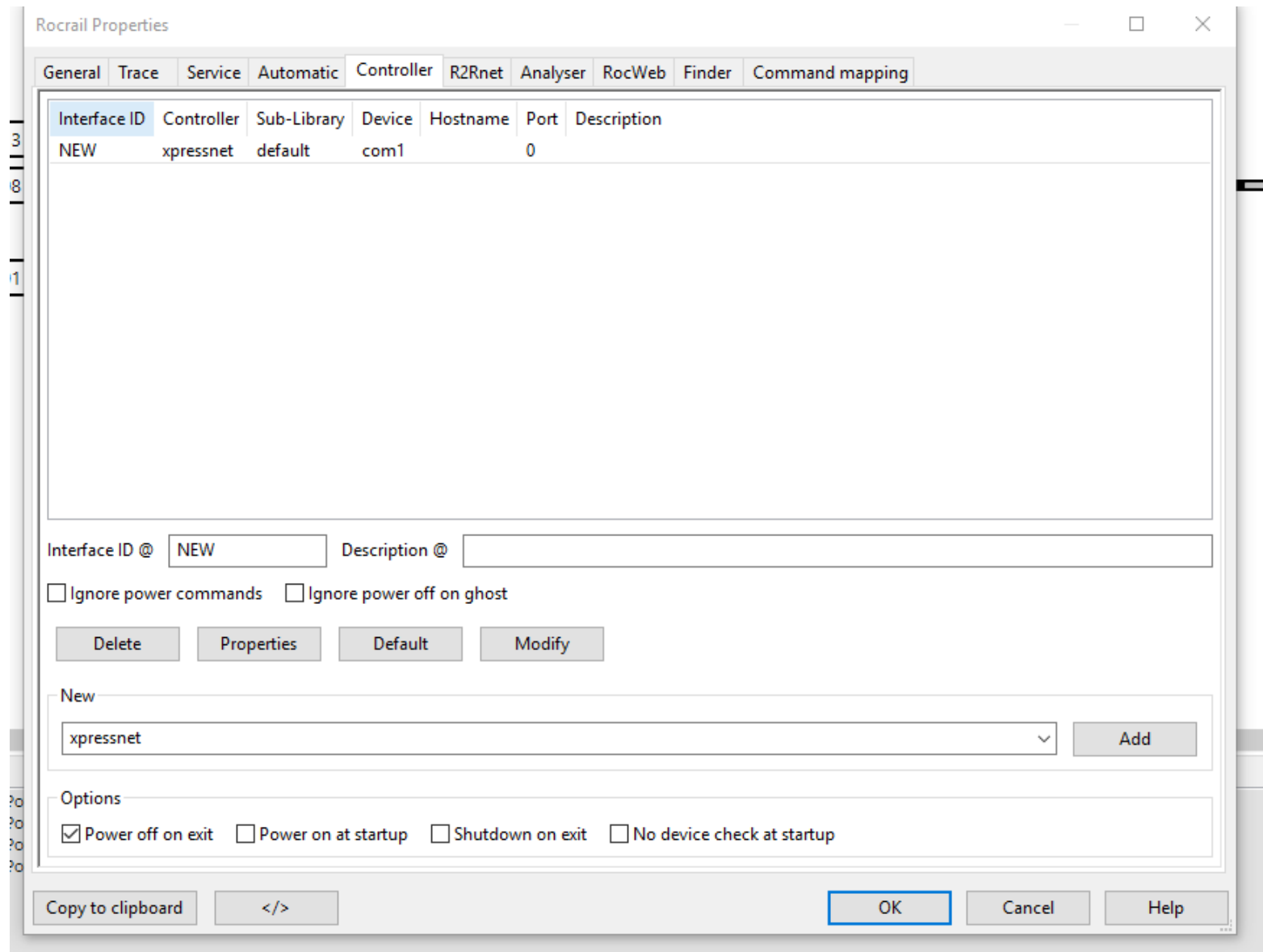


Connecting DR5000 to Rocrail

XpressNet Protocol

1. We launch Rocrail, in the File menu select Rocrail proprietress, in the opened window we pass to the Controllers tab.
2. In the New list, select the xpressnet protocol and click the Add button.



3. Click on the appeared line, in the opened window it is necessary to make the following settings.

Operating mode via USB

Interface ID - the name of the protocol in Rocrail, in this case DR5000_XpressNet_USB

Type - LI-USB

Device - Com port number, can be seen in the application DR5000 App, in this case COM3

Port – 5550



Press OK, restart Rocrail, the whole station is ready to go.

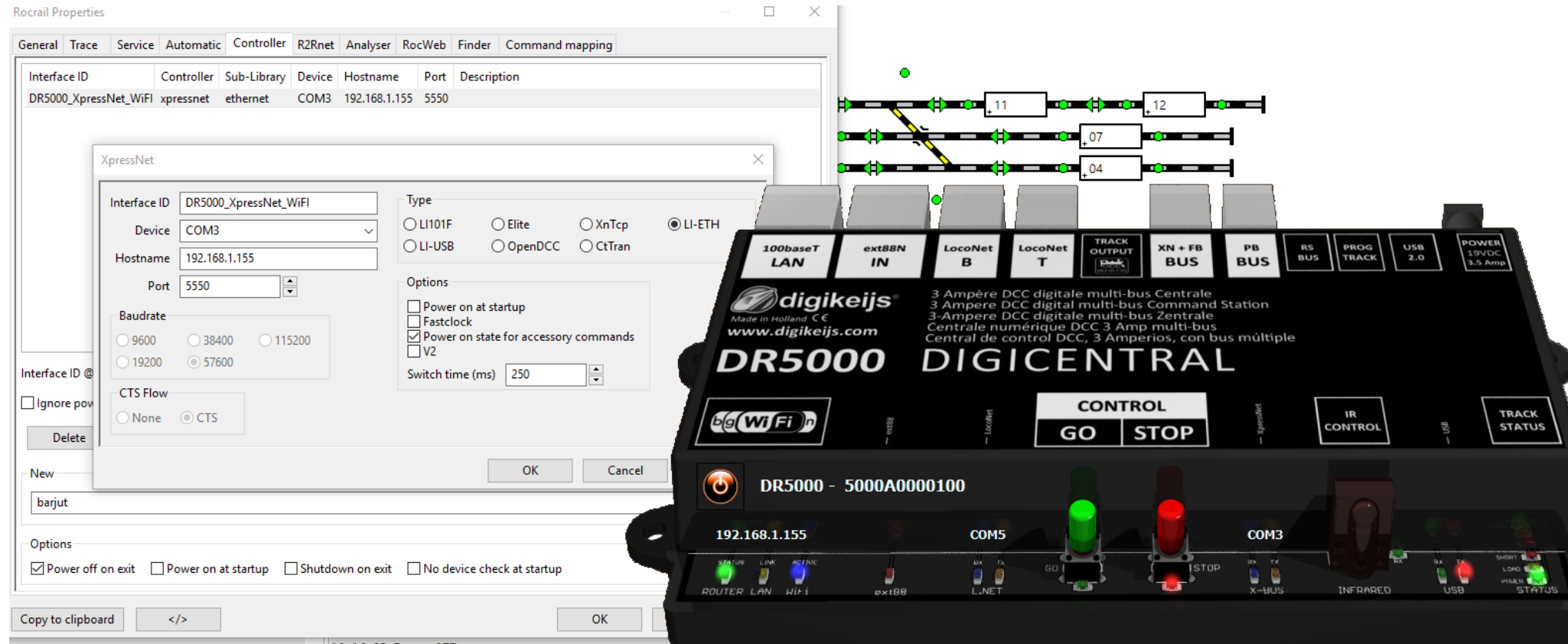
Operating mode by WIFI / Lan

Interface ID - the name of the protocol in Rocrail, in this case DR5000_XpressNet_WIFI

Type - LI-ETH

Hostname - the IP address of the station, can be seen in the application DR5000 App, in this case 192.168.1.155

Port - 5550



Press OK, restart Rocrail, the whole station is ready to go.

LocoNet Protocol

1. We launch Rocrail, in the File menu select Rocrail proprietress, in the opened window we pass to the Controllers tab.
2. In the New list, select the loconet protocol and click the Add button.

The screenshot shows the 'Rocrail Properties' window with the 'Controller' tab selected. The window has a title bar with standard minimize, maximize, and close buttons. Below the title bar is a tabbed interface with the following tabs: General, Trace, Service, Automatic, Controller (selected), R2Rnet, Analyser, RocWeb, Finder, and Command mapping. The main area of the window contains a table with the following headers: Interface ID, Controller, Sub-Library, Device, Hostname, Port, and Description. Below the table are two input fields: 'Interface ID @' and 'Description @'. There are two checkboxes: 'Ignore power commands' and 'Ignore power off on ghost'. Below these are four buttons: Delete, Properties, Default, and Modify. A section labeled 'New' contains a dropdown menu with 'loconet' selected and an 'Add' button. An 'Options' section at the bottom contains four checkboxes: 'Power off on exit' (checked), 'Power on at startup', 'Shutdown on exit', and 'No device check at startup'. At the very bottom of the window are four buttons: 'Copy to clipboard', '</>', 'OK', 'Cancel', and 'Help'.

Rocrail Properties

General Trace Service Automatic **Controller** R2Rnet Analyser RocWeb Finder Command mapping

Interface ID	Controller	Sub-Library	Device	Hostname	Port	Description
--------------	------------	-------------	--------	----------	------	-------------

Interface ID @ Description @

☐ Ignore power commands ☐ Ignore power off on ghost

Delete Properties Default Modify

New

loconet

Options

☒ Power off on exit ☐ Power on at startup ☐ Shutdown on exit ☐ No device check at startup

Copy to clipboard </> OK Cancel Help

- Click on the appeared line, in the opened window it is necessary to make the following settings.

Operating mode via USB

Interface ID - the name of the protocol in Rocrail, in this case DR5000_LocoNet_USB

Type - LocoBuffer

Device - Com port number, can be seen in the application DR5000 App, in this case COM5

Bauderate – 57000



Press OK, restart Rocrail, the whole station is ready to go.

Operating mode by WIFI / Lan

Interface ID - the name of the protocol in Rocrail, in this case DR5000_LocoNet_WIFI

Type - LbServer

Hostname - the IP address of the station, can be seen in the application DR5000 App, in this case 192.168.1.155

Port – 5550



Press OK, restart Rocrail, the whole station is ready to go.

Z21 Protocol

1. We launch Rocrail, in the File menu select Rocrail proprietress, in the opened window we pass to the Controllers tab.
2. In the New list, select the z21 protocol and click the Add button.

The screenshot shows the 'Rocrail Properties' dialog box with the 'Controller' tab selected. The dialog has a title bar with standard window controls. Below the title bar is a tabbed interface with the following tabs: General, Trace, Service, Automatic, Controller (selected), R2Rnet, Analyser, RocWeb, Finder, and Command mapping. The main area of the dialog contains a table with the following headers: Interface ID, Controller, Sub-Library, Device, Hostname, Port, and Description. Below the table are two input fields: 'Interface ID @' and 'Description @'. There are two checkboxes: 'Ignore power commands' and 'Ignore power off on ghost'. Below these are four buttons: 'Delete', 'Properties', 'Default', and 'Modify'. A section labeled 'New' contains a dropdown menu with 'z21' selected and an 'Add' button. An 'Options' section contains four checkboxes: 'Power off on exit' (checked), 'Power on at startup', 'Shutdown on exit', and 'No device check at startup'. At the bottom of the dialog are four buttons: 'Copy to clipboard', '</>', 'OK', 'Cancel', and 'Help'.

Rocrail Properties

General Trace Service Automatic **Controller** R2Rnet Analyser RocWeb Finder Command mapping

Interface ID	Controller	Sub-Library	Device	Hostname	Port	Description
--------------	------------	-------------	--------	----------	------	-------------

Interface ID @ Description @

☐ Ignore power commands ☐ Ignore power off on ghost

Delete Properties Default Modify

New

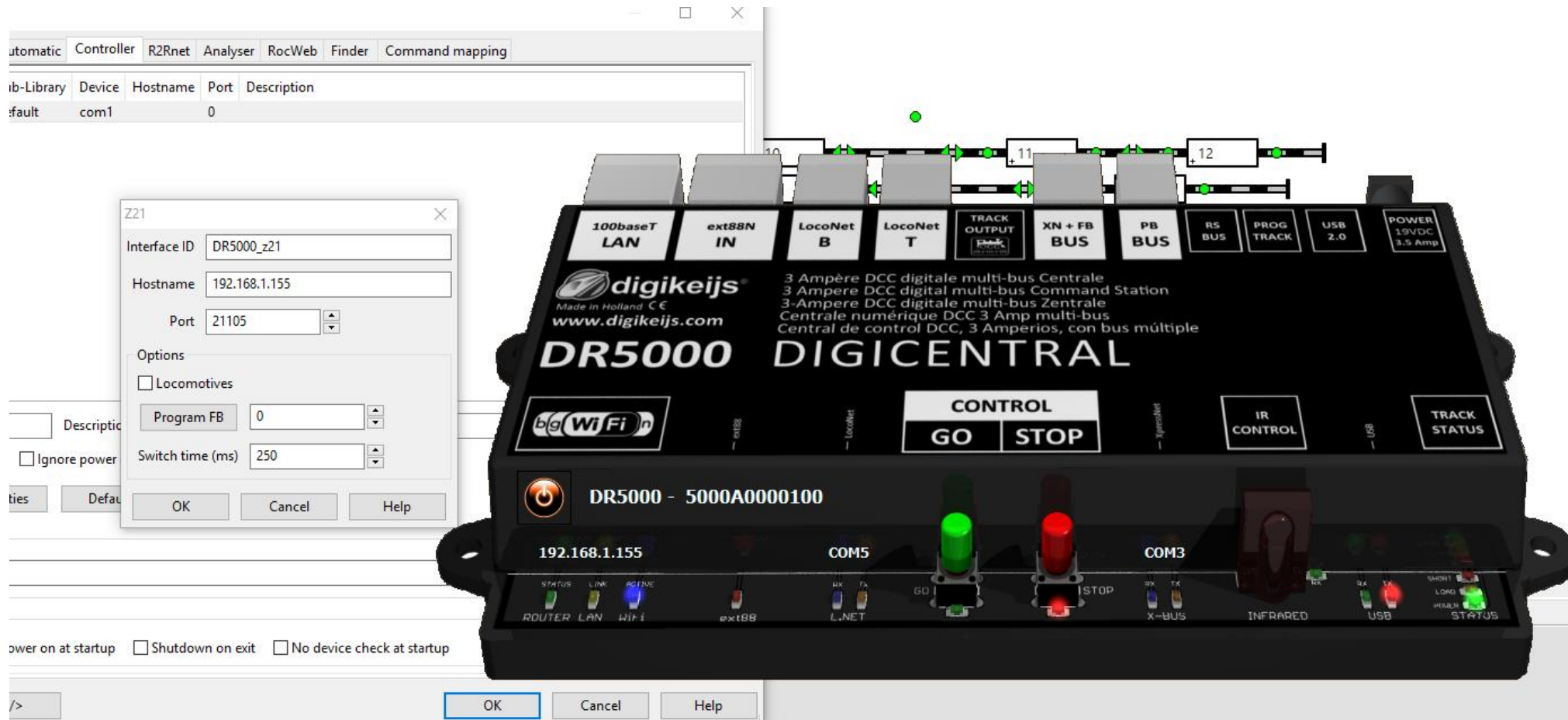
z21 Add

Options

☒ Power off on exit ☐ Power on at startup ☐ Shutdown on exit ☐ No device check at startup

Copy to clipboard </> OK Cancel Help

3. Click on the appeared line, in the opened window it is necessary to make the following settings.
Interface ID - the name of the protocol in Rocrail, in this case DR5000_z21
Hostname - the IP address of the station, can be seen in the application DR5000 App, in this case 192.168.1.155
Port – 21105



Press OK, restart Rocrail, the whole station is ready to go.